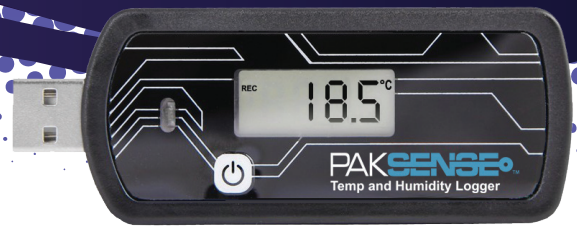


Temp & Humidity Logger

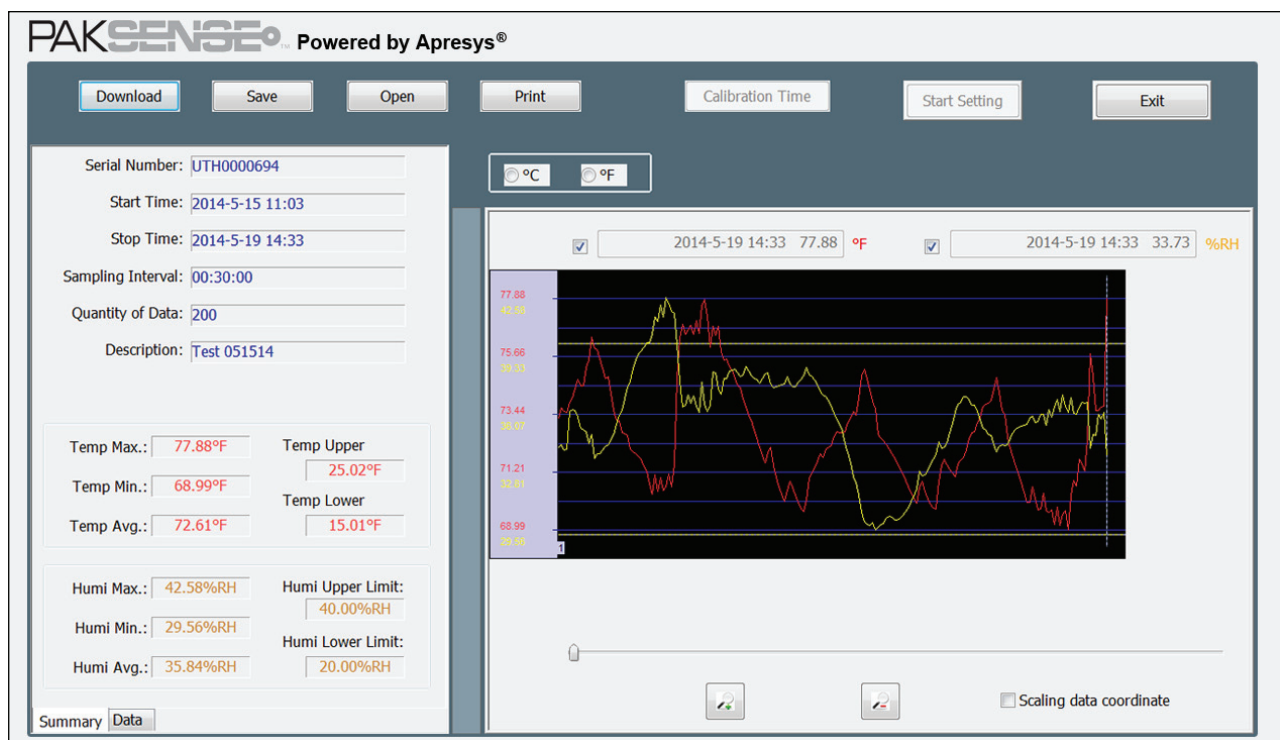


Small and compact, these loggers record temperature and humidity levels of a product's environment during distribution and storage. Both temperature and humidity ranges are programmable via the PakSense TH Software and all units are reusable. The LED screen allows users to view the current time and most recent temperature and humidity readings. They are optimal for use in closed-loop situations and import/export container shipments.

Humidity and temperature data collected by the loggers can be downloaded and graphed. All data collected by the loggers can be saved electronically and is easily printed and shared.

Cold Chain Simplicity

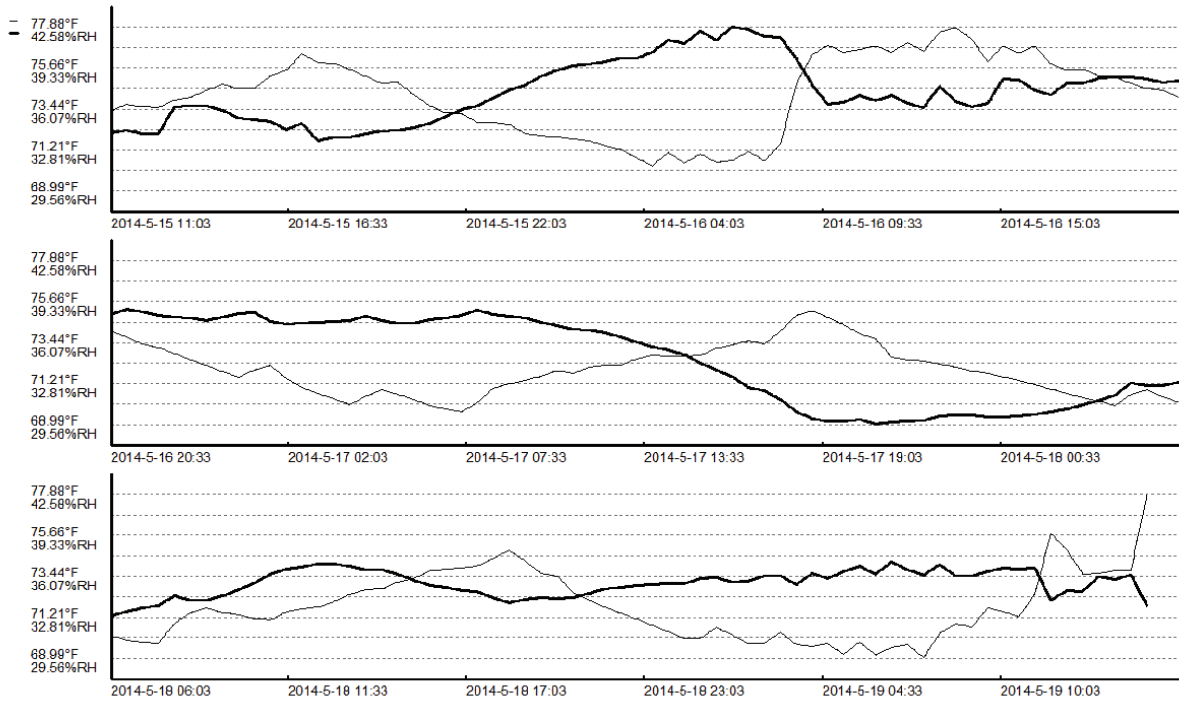
- Reusable
- Programmable
- Temperature & humidity
- LED screen to view data
- Easy to use
- Economical



PakSense Temperature & Humidity Logger Specifications

Relative Humidity	Operating Range	0%RH to 100%RH
	Accuracy	± 3%RH, 0-80% RH
	Resolution	0.01%RH
Temperature	Operating Range	-40°F (-40°C) to 185°F (85°C)
	Typical Accuracy	±1°F (±0.5°C), 14°F (-10°C) to 185°F (85°C) ± 1.8° F (1°C), -40°F to 14°F (-10°C)
	Resolution	0.01°F (0.01°C)
Memory	32,000 data points (16,000 RH%; 16,000 Temperature)	
Recording Interval	1 minute to 24 hours (programmable by user)	
Delay before Start (cool down)	1 minutes to 24 hours (programmable by user)	
Reusable Operating Life	Up to 15 months	
Dimensions	3.4" x 1.1" x 0.5"(8.6cm * 2.8 cm * 1.2 cm)	

Description	ID	Start Time	Stop Time	Interval	Quantity	Temp Average	Temp Alarm	Humi Average	Humi Alarm
Test 051514	LTH0000694	2014-5-15 11:03	2014-5-19 14:33	00:30:00	200	72.62°F	[15.01,25.02]°F	35.84%RH	[20.00,40.00]%RH



Printable Graph

PAKSENSE™

+1-208-489-9010 www.paksense.com info@paksense.com

P/N: LITFUDS Rev. Date: 09/30/2015